

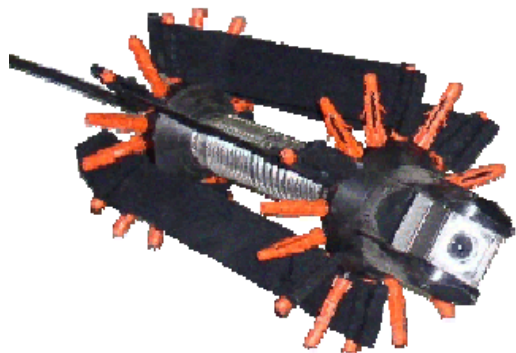
Case: Inspection of welding seams

Visual inspection is still the most common way to check welding seams for inclusions, cracks and other irregularities. A camera with special guides and pushrod is used to inspect from the inside. This compact system is easy to transport.

Visual inspection is still the most common way to check welding seams for inclusions, cracks and other irregularities. Above pictures show the ZRK 75 camera with a swerve-rotation-head that is used to inspect welding seams of tubes from the inside. The guides have been modified in order to fit a range of diameters. The camera head can rotate 360 degrees as the swerve

270 degrees. A pushrod enables precise position at any spot. Together with some extra lighting a clear view is achieved of the inside. The lightweight monitor box (3th picture on the right) and the compact camera are easy to transport. Therefore it is possible to inspect on all sorts of locations, as shown in a brand-new dairy plant in Letland.

Do you have a question about one of these customised projects? Please contact us using the [contact form](#) or call +31 (0) 499 49 45 90 for more information.



**Detail camera
with guides**



**Camera
ready for
use**



**Inspection on a
color display**