

Case: Decommissioning a nuclear powerplant

The decommissioning of nuclear equipment is a dangerous job. No radioactive material or dust should escape. Contractors are always looking for innovative solutions to do the job. The Camtronics camera system allows a clear view on the effect of robotic tools, such as highpressure cleaners and lasercutters.

Decommissioning and dismantling a nuclear plant has to be done very careful. There's always special attention for any radioactive waste or left dust. This should never leave a building and contaminate the enviroment. On the other hand accessibility to such installations and

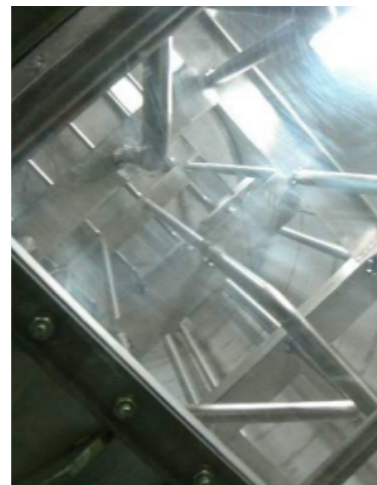
plants is not easy. Therefor these jobs are done by specialists such as Belgoproces (Belgium). These specialist always inquire for innovative methodes to increase safety and efficiency.

On the picture you can see a test application. Normally a nuclear vessel is loaded with tubes and other parts that hinder safety. A camera system of Camtronics has been installed to have a better view on the effects of robotic tools, such as highpressure cleaners and lasercutters, without entering the vessel itself. Underpressure in the building (for reasons of safety) make these tasks differcult as on the working spot high-pressure develops. Camtronics has put into service its swerve-rotation camera's in a special dust protective housing.

Do you have a question about one of these customised projects? Please contact us using the [contact form](#) or call +31 (0) 499 49 45 90 for more information.



Front view of camera



During assembly



Surveillance application